

## ÖRNSKÖLDSVIK

## RNP RWY 30

EGNOS CH 44109 E 30A

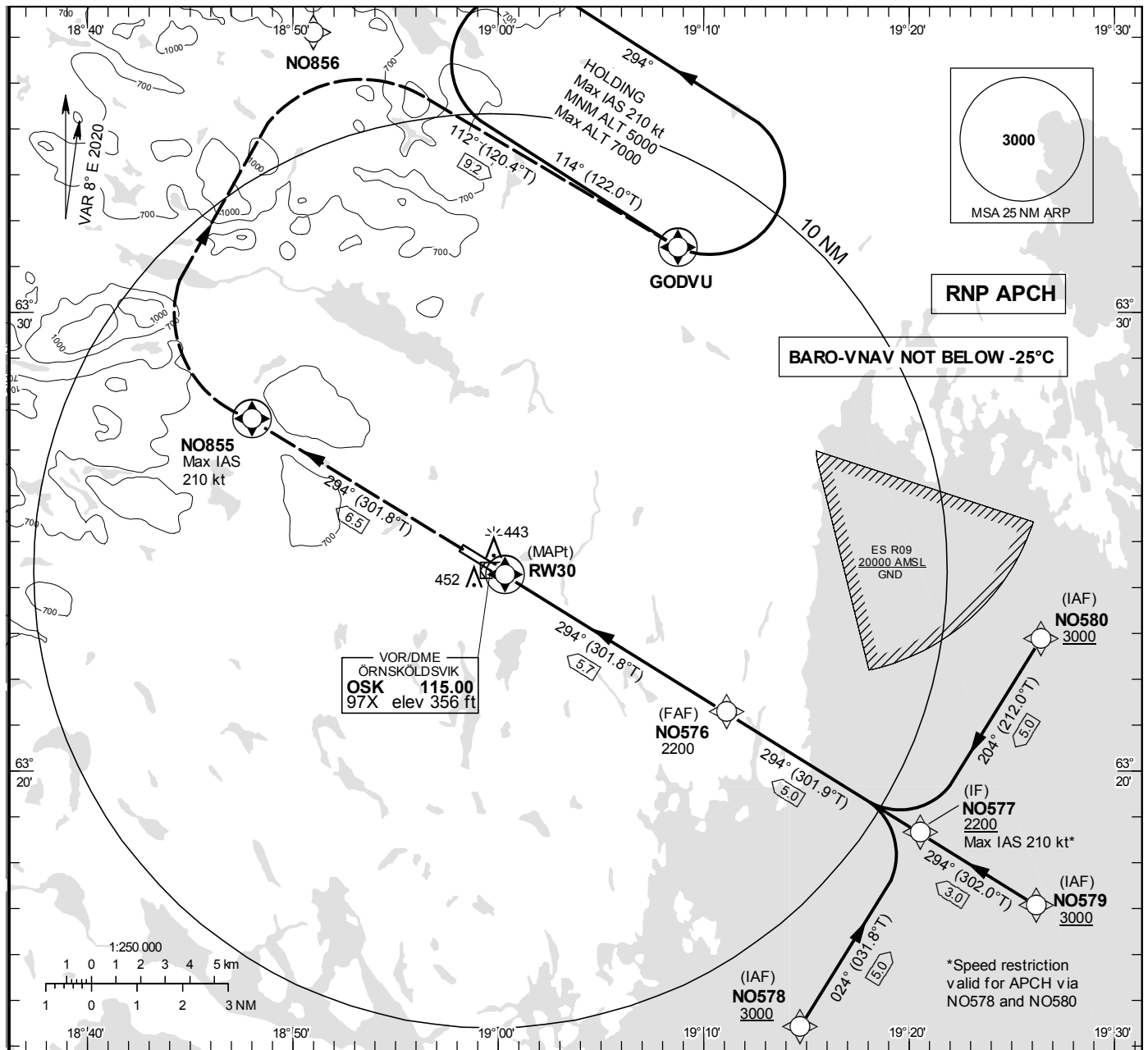
INSTRUMENT  
APPROACH  
CHART – ICAO

THR ELEV 332 ft, AD ELEV 355 ft

OCH are related to THR.  
BRG are MAG (True).  
ALT, HGT and ELEV in ft.

ÖVIK TOWER

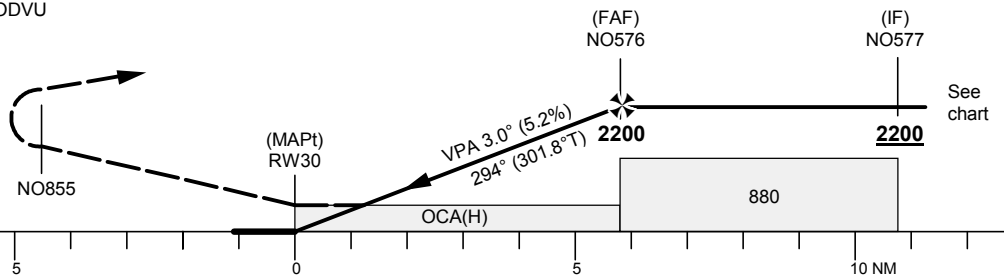
122.255



TA 5000 ft AMSL

RDH 50 ft

CLIMB STRAIGHT AHEAD TO NO855.  
TURN RIGHT (MAX IAS 210 kt) TO NO856.  
TURN RIGHT (MAX IAS 210 kt) TO GODVU  
CLIMBING TO 5000  
AND JOIN GODVU HOLDING



OCA (H)					Final approach distance FAF-MAPt 5.7 NM							
Cat of ACFT	A	B	C	D	Dist to RW30	5	4	3	2	1		
LPV	574(242)	586(254)	594(262)	604(272)	ALT	1970	1650	1340	1020	700		
LNAV/VNAV	580(250)	590(260)	610(280)	620(290)	GS	kt	80	100	120	140	160	180
LNAV	670(340)				Rate of descent	ft/min	425	535	635	745	850	955

CHANGE: Editorial

## ÖRNSKÖLDSVIK

## RNP RWY 30 via IAF NO578

Path Desc	Waypoint Identifier	Fly-over	Course °M(°T)	Dist (NM)	Turn Dir	Altitude	Speed	VPA/RDH	Rec Navaid	Navigation Specification
IF	NO578	-	-	-	-	+3000	-	-	-	RNP APCH
TF	NO577	-	024°(031.8°)	5.0	-	+2200	-210	-	-	RNP APCH
TF	NO576	-	294°(301.9°)	5.0	L	@2200	-	-	-	RNP APCH
TF	RW30	Y	294°(301.8°)	5.7	-	@382	-	-3.0/50	-	RNP APCH
CF	NO855	Y	294°(301.8°)	6.5	-	-	-210	-	OSK	RNP APCH
DF	NO856	-	-	-	R	-	-	-	-	RNP APCH
TF	GODVU	Y	112°(120.4°)	9.2	R	+5000	-	-	-	RNP APCH
HM	GODVU	Y	114°(122.0°)	-	L	+5000	-210	-	-	RNAV 1

## RNP RWY 30 via IAF NO579

Path Desc	Waypoint Identifier	Fly-over	Course °M(°T)	Dist (NM)	Turn Dir	Altitude	Speed	VPA/RDH	Rec Navaid	Navigation Specification
IF	NO579	-	-	-	-	+ 3000	-	-	-	RNP APCH
TF	NO577	-	294°(302.0°)	3.0	-	+2200	-	-	-	RNP APCH
TF	NO576	-	294°(301.9°)	5.0	-	@2200	-	-	-	RNP APCH
TF	RW30	Y	294°(301.8°)	5.7	-	@382	-	-3.0/50	-	RNP APCH
CF	NO855	Y	294°(301.8°)	6.5	-	-	-210	-	OSK	RNP APCH
DF	NO856	-	-	-	R	-	-	-	-	RNP APCH
TF	GODVU	Y	112°(120.4°)	9.2	R	+5000	-	-	-	RNP APCH
HM	GODVU	Y	114°(122.0°)	-	L	+5000	-210	-	-	RNAV 1

## RNP RWY 30 via IAF NO580

Path Desc	Waypoint Identifier	Fly-over	Course °M(°T)	Dist (NM)	Turn Dir	Altitude	Speed	VPA/RDH	Rec Navaid	Navigation Specification
IF	NO580	-	-	-	-	+ 3000	-	-	-	RNP APCH
TF	NO577	-	204°(212.0°)	5.0	-	+2200	-210	-	-	RNP APCH
TF	NO576	-	294°(301.9°)	5.0	R	@2200	-	-	-	RNP APCH
TF	RW30	Y	294°(301.8°)	5.7	-	@382	-	-3.0/50	-	RNP APCH
CF	NO855	Y	294°(301.8°)	6.5	-	-	-210	-	OSK	RNP APCH
DF	NO856	-	-	-	R	-	-	-	-	RNP APCH
TF	GODVU	Y	112°(120.4°)	9.2	R	+5000	-	-	-	RNP APCH
HM	GODVU	Y	114°(122.0°)	-	L	+5000	-210	-	-	RNAV 1

## FAS Data Block

## RNP RWY 30

## Input data

Operation Type	0
SBAS Provider	1
Airport Identifier	ESNO
Runway	30
Runway Direction	0
Approach Performance Designator	0
Route Indicator	
Reference Path Data Selector	0
Reference Path Identifier	E30A
LTP/FTP Latitude	632416.2500N
LTP/FTP Longitude	0190019.4800E
LTP/FTP Ellipsoidal Height (metres)	124.7
FPAP Latitude	632450.3600N
Delta FPAP Latitude (seconds)	34.1100
FPAP Longitude	0185815.8000E
Delta FPAP Longitude (seconds)	-123.6800
Threshold Crossing Height	50.0
TCH Units Selector	0
Glidepath Angle (degrees)	3.00
Course Width (metres)	105.00
Length Offset (metres)	0
HAL (metres)	40.0
VAL (metres)	50.0

## Output data

Data Block	10 0F 0E 13 05 1E 00 00 01 30 33 05 F4 D3 35 1B 30 FF 27 08 DF 18 7C 0A 01 C0 39 FC F4 01 2C 01 64 00 C8 FA 6E 40 68 CE
Calculated CRC Value	6E4068CE

## Required Additional Data

ICAO Code	ES
LTP/FTP Orthometric Height (metres)	101.2
FPAP Orthometric Height (metres)	107.9